

Dubai 2 Zimmer Appartements - the opera district -

Preisliste + Grundrisse



Projekt	Objekt ID	Art	Objekt Model	Schlafzimmer	Gesamtfläche m ²	Verkaufspreis €
Downtown Dubai	BD Act One Act Two T2-10-1003		3 Apartment	2	108	607.832,75 €
Downtown Dubai	BD Act One Act Two T2-20-2004		4 Apartment	2	104	577.239,10 €
Downtown Dubai	BD Act One Act Two T2-22-2202		2 Apartment	2	106	613.851,18 €
Downtown Dubai	BD Act One Act Two T2-26-2603		3 Apartment	2	112	628.395,71 €

Bitte nehmen Sie auf den nachfolgenden Seiten die Grundrisse zur Kenntnis

BD Act One Act Two T2-10-1003



2 Zimmer - 02 Einheit 03 Turm 2 – Zone 1 Stockwerke L06-L13



1. All dimensions are in imperial and metric, and measured to structural elements and exclude wall finish and construction tolerances. 2. All materials, dimensions, and drawings are approximate only. 3. Information is subject to change without notice, at developer's absolute discretion. 4. Actual area may vary from the stated area. 5. Drawings not to scale. 6. All images used are for illustrative purposes only and do not represent the actual size, features, specifications, fittings, and furnishings. 7. The developer reserves the right to make revisions/alterations, at its absolute discretion, without any liability whatsoever.

BD Act One Act Two T2-20-2004

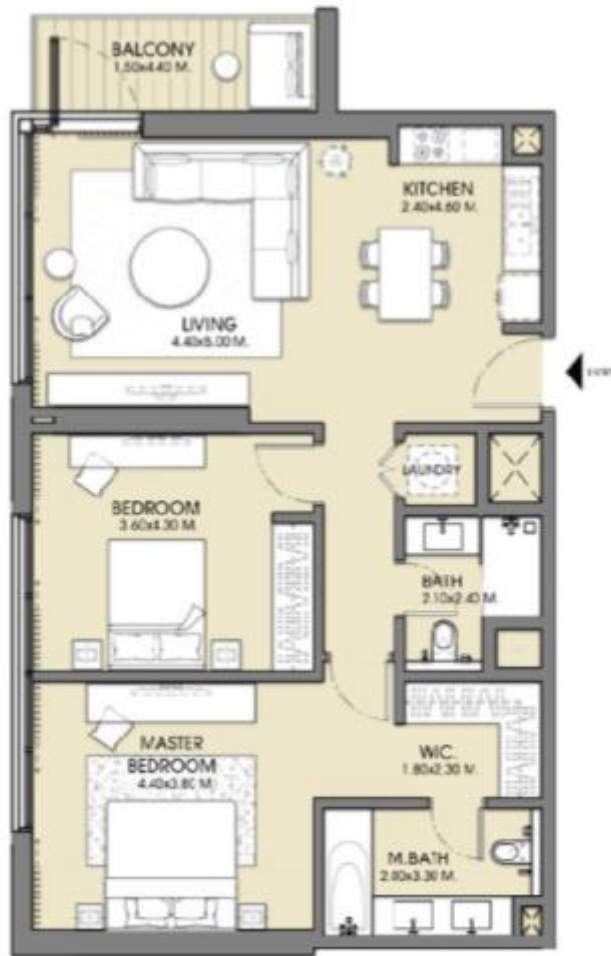


2 Zimmer - 01 Einheit 04 Turm 2 – Zone 2 Stockwerke L16-L27



1. All dimensions are in imperial and metric, and measured to structural element and exclude wall finish and construction tolerances. 2. All materials, dimensions, and drawings are approximate only. 3. Information is subject to change without notice, at developer's absolute discretion. 4. Actual areas may vary from the stated area. 5. Drawings not to scale. 6. All images used are for illustrative purposes only and do not represent the actual size, features, specifications, fittings, and furnishings. 7. The developer reserves the right to make revisions/alterations, at its absolute discretion, without any liability whatsoever.

BD Act One Act Two T2-22-2202



2 Zimmer - 08

Einheit 02

Turm 2 – Zone 2

Stockwerke L27-L32
L29-L32



SELLABLE AREA

	sq.m	sq.ft
Suite Area	98.52	1060
Balcony Area	7.71	83
Total Area	106.23	1143

1. All dimensions are in imperial and metric, and measured to structural elements and exclude wall finished construction tolerances. 2. All materials, dimensions, and drawings are approximate only. 3. Information is subject to change without notice, at developer's absolute discretion. 4. Actual area may vary from the stated area. 5. Drawings not to scale. 6. All images used are for illustrative purposes only and do not represent the actual size, features, specifications, fittings, and furnishings. 7. The developer reserves the right to make revisions/alterations, at its absolute discretion, without any liability whatsoever.

BD Act One Act Two T2-26-2603



2 Zimmer - 07 Einheit 03 Turm 2 – Zone 2 Stockwerke L16-L27
L29-L38

SELLABLE AREA		
	sq.m	sq.ft
Suite Area	99.10	1067
Balcony Area	13.19	142
Total Area	112.29	1209

1. All dimensions are in imperial metric, and measured to structural element and exclude wall finished construction tolerances. 2. All materials, dimensions, and drawings are approximate only. 3. Information is subject to change without notice, at developer's absolute discretion. 4. Actual area may vary from the stated area. 5. Drawings not to scale. 6. All images used are for illustrative purposes only and do not represent the actual size, features, specifications, fittings, and furnishings. 7. The developer reserves the right to make revisions/alterations, at its absolute discretion, without any liability whatsoever.